



Imperial Wharf, The Boulevard
Fulham SW6

GARTONJONES.COM



Imperial Wharf, The Boulevard Fulham, SW6

£850 Per Week

Spacious Two-Bedroom Riverside Apartment with Large Terrace

A beautifully presented two-bedroom apartment 1044sqft (97sqm) located on the 5th floor (with lift) of this prestigious riverside development in the heart of Imperial Wharf.

The property features a bright open-plan reception room and a fully integrated kitchen equipped with premium Miele and Gaggenau integrated appliances. Enjoy access to a large private terrace—perfect for entertaining or relaxing with partial views of the River Thames.

Additional benefits include two luxury bathrooms (one ensuite), wood flooring, comfort cooling, ample storage with a walk-in wardrobe in the master bedroom, and built-in wardrobes in the second bedroom.

Development Amenities

- 24-hour concierge
- Residents' gym
- Landscaped gardens
- On-site cafés and shopping

Excellent Transport Links

- Imperial Wharf train station on-site, providing fast connections to Clapham Junction, Shepherd's Bush, and West Brompton
- River Bus Service from Chelsea Harbour Pier to Putney and Blackfriars Millennium Pier

12 Month Minimum Term
5 Week Security Deposit
Council Tax — Hammersmith & Fulham — Band G

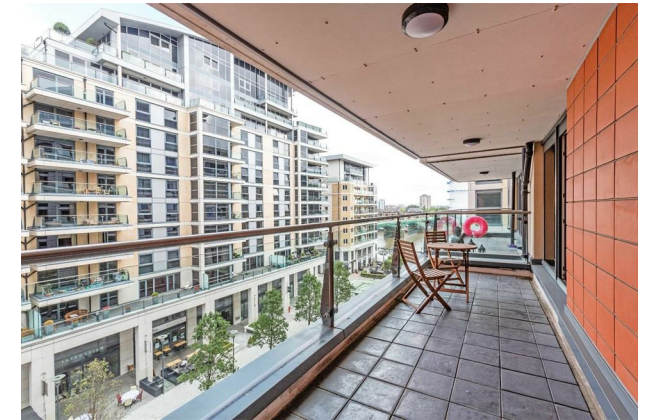
EPC — C (75)

- 1044sq.ft (97sq.m)
- 2 Double Bedrooms
- 2 Bathrooms (1 En-Suite)
- 5th Floor
- Kitchen with Miele & Gaggenau Integrated Appliances
- Large Private Terrace with Partial River
- Open Plan Reception Room
- 24 Hour Concierge
- Easy Reach Of Imperial Wharf Overground Station
- EPC Rating C (75)

GARTON JONES.COM

11 Park Street
Chelsea Creek
London
SW6 2FS

Lettings:
+44 (0) 20 7824 7090
paul@gartonjones.com
www.gartonjones.com



Fountain House

Approximate Gross Internal Area
1044 sq ft / 97 sq m

